

ML Series D66mm Bulb Revolving Warning Signal Light



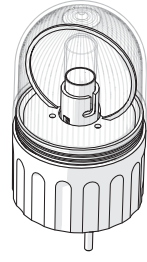
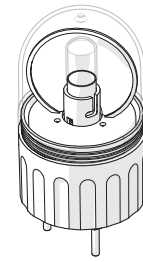
Compact Revolving Warning Light perfectly designed for small devices.



- Incandescent or Xenon type
- Red, Yellow, Green and Blue lens available
- Smooth lens or Prism lens
- Stud mounted or Pole mounted
- Optional Wall Mounting Brackets available
- Wide range of power supply

▼ Smooth lens

▼ Prism lens



Ordering Information

MLG F - 20 - R

① ② ③ ④

1. Lens Style

MLG	Ø66mm Dome top lens Signal Light (Stud mount)
MLP	Ø66mm Dome top lens Signal Light (Pole mount)

2. Light Style

	Rotating Light (Smooth Lens)
F	Flashing Light (Prism Lens) - *Note
S	Strobe Light with Xenon Lamp (110V AC or 220V AC only)

3. Power Supply

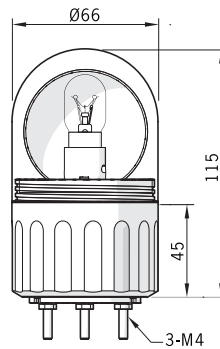
01	12V AC/DC
02	24V AC/DC
10	110V AC
20	220V AC

4. Lens Colors

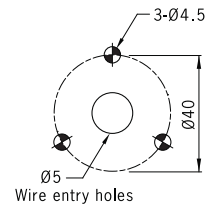
R	Red
Y	Yellow
G	Green
B	Blue

Note - Flashing types of DC power only

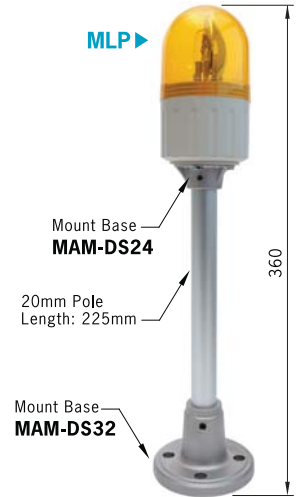
Dimensions (unit: mm)



► Hole Mounting

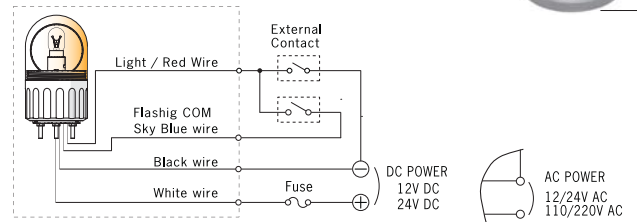


MLP

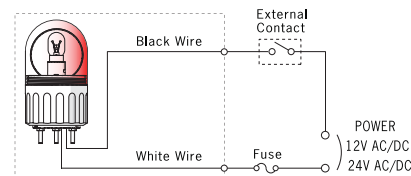


Wiring Diagram

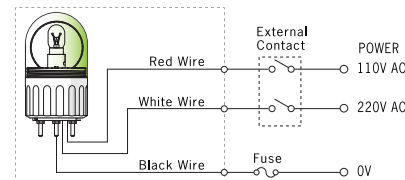
► Flashing Lights



► Rotating & Strobe Lights



► Rotating & Strobe Lights



Specifications

Bulb Lights

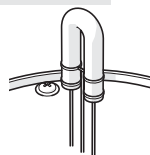
Operation/Function	Rotating , Flashing
Power Supply	AC/DC 12V , AC/DC 24V , 110V AC , 220V AC (50/60Hz)
Lens Diameter	86 mm
Lens Color	Red, Yellow, Green, Blue (Lens Type :Smooth)
Rotation Rate	130 times/ min
Flash Rate	80 times/ minute
Ambient Temperature	-15°C ~ 40°C
Storage Temperature	-25°C ~ 70°C
Ambient Humidity	45~85% RH
Degree of Protection	IP42
Approvals	CE, RoHS
Recommended Wire Size	AC 110/220V: VSF / 0.75mm ² (Power supply wire only) AC/DC 12/24V: 1007 UL / 22AWG

Current Draw

Power Supply	12V	24V	110V	220V
Current Draw	0.6A, 8W	0.3A, 8W	0.07A, 8W	0.03A, 8W

Xenon Strobe Lights

Power Supply	AC 110V , AC 220V (50/60Hz)
Current	AC 110V : 0.22A , AC 220V : 0.11A
Lens Color	Red, Yellow, Green, Blue (Lens Type : Prism)
Strobe Pulse	80 times/ minute ±3%
Degree of Protection	IP42
Approvals	CE, RoHS
Recommended Wire Size	VSF / 0.75mm ² (Power supply wire only)
Lamp Wattage	6W Lamp



Lamp One body Type

Replacement Parts

Rated Voltage	Bulb	Rated Voltage	Bulb
12V DC	12V 8W	110V AC	130V 8W
24V DC	24V 8W	220V AC	240V 8W

► See page 39 for Replacement Bulbs product

Wall Mount Brackets



MAP-DS30
Material: ABS resin



MAM-DS26
Material: Steel

See Page 40 - 42 for Mounting Options and Accessories.