

KH-4022, 4025, 4030 Series



CLASSIFICATION

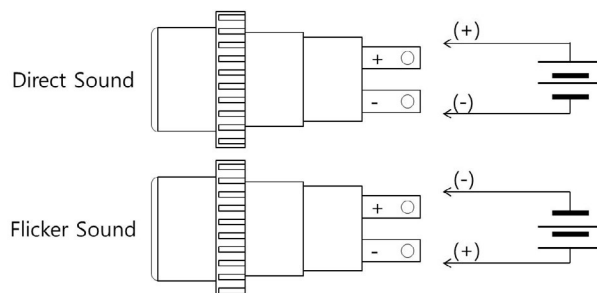
KH - 40 22 - D

Diameter	22	∅22
	25	∅25
	30	∅30
Sound	D	Direct
	F	Flicker
	none	Dual

Specification

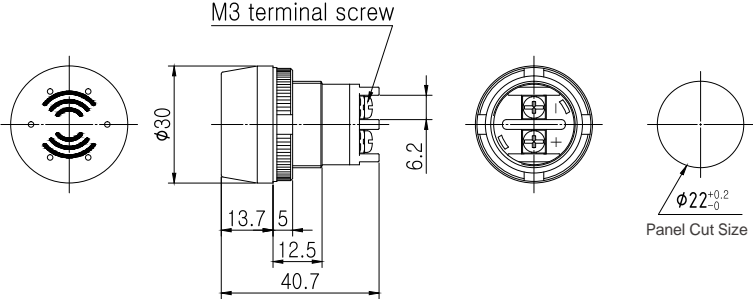
Input Voltage	12~24VDC(± 10%)
Current consumption	Max. 25mA
dB	min. 65dB (distance 1m)
Insulation resistance	100M (500VDC)
Dielectric strength	1,000 VAC between live part and dead part
Vibration resistance	10~55Hz double amplitude 0.5mm at X, Y, and Z axis for 1 hour
Shock resistance	20G
Protection	IP40
Ambient operating Temperature	- 10 ~+55
Ambient temperature(stock)	- 25 ~+70
Ambient humidity	45~85%RH
Material	Buzzer part: Nylon, Body: PC
Weight	10g

Wiring Diagram for dual type

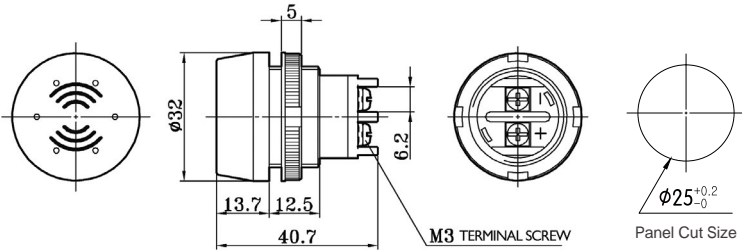


Dimension

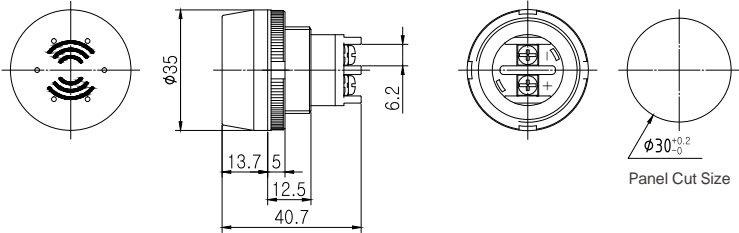
KH-4022D



KH-4025



KH-4030D



SQUARE LIGHT

TOWER LIGHT

BUZZER

TIMER & COUNTER

RELAY

SOCKETS

TERMINAL BLOCKS

CONTROL BOX