

SFC Series

Flexible Coupling

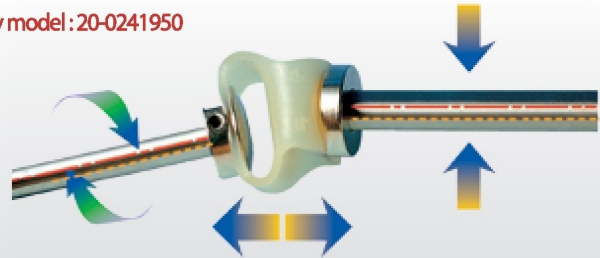
'SI. CO' mark (Trademark : 40-2012-0061376) indicates that the authenticity is certified.



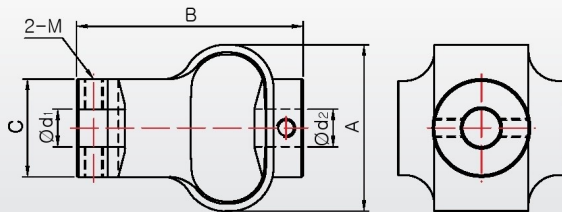
Features

- Excellent absorbability in misalignment
(eccentricity, angular misalignment, end-play)
- Absorbs impact and vibration
- No lubrication
- Low moment of inertia

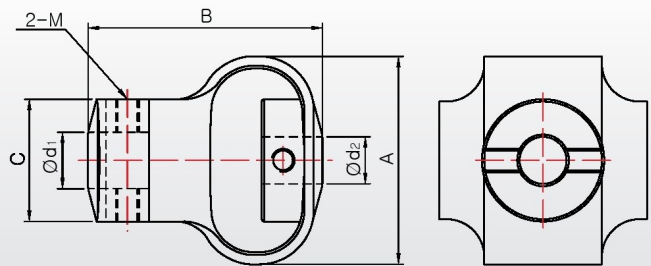
※ Patent /Utility model : 20-0241950



SFC 29, 38



SFC 48, 54



Dimensions & Performance

Product Number	Dimension (mm)(± 0.3)			Fastening Bolt M	Fastening Torque (N · m)	Mass (g)	Max. RPM (min^{-1})	Max Torque (N · m)	Permissible Angular misalignment ($^{\circ}$)	Permissible Parallel misalignment (mm)	End-Play (mm)
	A	B	C								
SFC-29	25	28	18	M4	1.7	19	3,000	0.35	10	2	1.5
SFC-38	32	35	22.5	M4	1.7	38	3,000	1.35	10	2.5	2
SFC-48	43	50	26	M5	4	60	3,000	1.8	12	2.5	2
SFC-54	50	59	29.5	M6	7	140	3,000	4.5	12	3	2

Standard Inner diameter

Product Number	Standard Inner diameter (d_1, d_2) Standard INNER Diameter (mm)									
	4	5	6	8	10	12	14	15	16	
SFC-29	●	●	●	●	●					
SFC-38			●	●	●	●				
SFC-48				●	●	●	●			
SFC-54					●	●	●	●	●	●

※ Please contact us when you order a product which is not a standard inner diameter

How to order product



※ For INNER diameter, key type is not available for SFC type

※ Please mark each inner diameter size.

※ Please contact us when you order