

PST 1015



PRESENSE

Special Features

- Thermocouples, RTD, resistance or voltage
- Configuration is made in seconds with the user friendly Windows software
- High accuracy
- Built-in cold junction compensation
- Temperature linear output
- Connection terminals also accessible from the outside
- Available with screw-in temperature probe

CE

Description

These temperature transmitters are designed for universal use in plant and machine building, also in the process industry. They offer **high accuracy** and **excellent protection** against electromagnetic influences (EMI). **PST1015** is a head-mount temperature transmitter with a single input.

The single input accepts thermocouples, RTD, resistance or voltage source. All inputs are linearized and converted into an industrial standard **4-20 mA** output for transmission to your system.



Applications

- Process industry
- Machine building and plant construction

Specifications

Input Signals

RTD | Thermocouple | Resistance, Voltage (Optional)

Output Signals

4-20mA | 1-5V (Optional)

Digital Communication

Hart protocol (Optional)

Accuracy

≤0.1 %FS

Power Supply

12-40 VDC

Response Time

≤1s

Operating Temperature

-40 ... +85 °C

Vibration Resistance

4g / 2 ... 150Hz

Cold Junction Compensation

Built-in

Configuration

PAD or PC

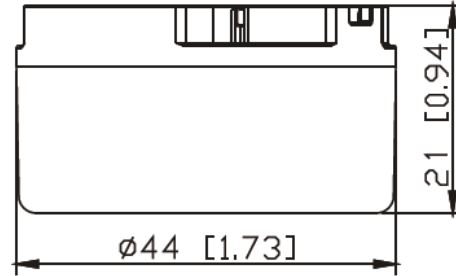
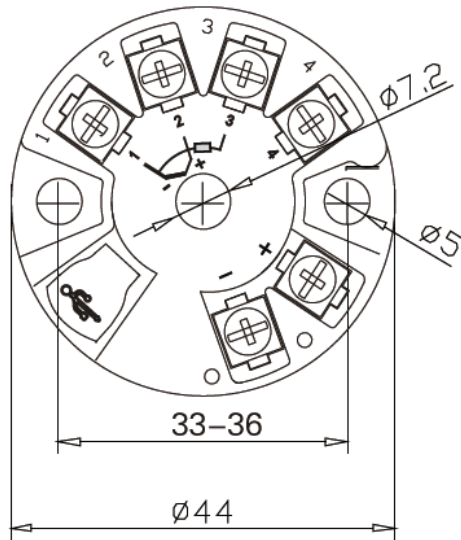
Input of The Temperature Transmitter

Input RTD	Max. configurable measuring range (MR)	Min. measuring span (MS)	Wiring
PT100	-200 ... +850 °C (-328 ... +1,562 °F)	10 K	3-Wire
Cu50	-50 ... +150 °C (-58 ... +302 °F)	10 K	3-Wire

Input Thermocouples	Max. configurable measuring range (MR)	Min. measuring span (MS)	Wiring
J	-100 ... +1200 °C (-328 ... +1,562 °F)	50 K	2-Wire
K	-180 ... +1372 °C (-58 ... +302 °F)	50 K	2-Wire
N	-180 ... +1300 °C (-58 ... +302 °F)	50 K	2-Wire
R	-50 ... +1760 °C (-58 ... +302 °F)	500 K	2-Wire
B	+400 ... +1820 °C (-58 ... +302 °F)	500 K	2-Wire
E	-100 ... +1000 °C (-58 ... +302 °F)	50 K	2-Wire
S	-500 ... +1760 °C (-58 ... +302 °F)	500 K	2-Wire
T	-200 ... +400 °C (-58 ... +302 °F)	50 K	2-Wire

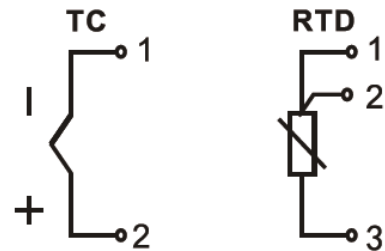
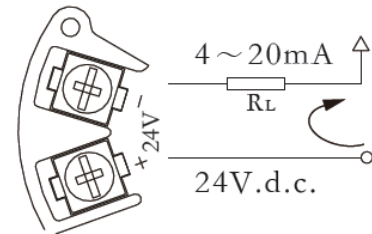
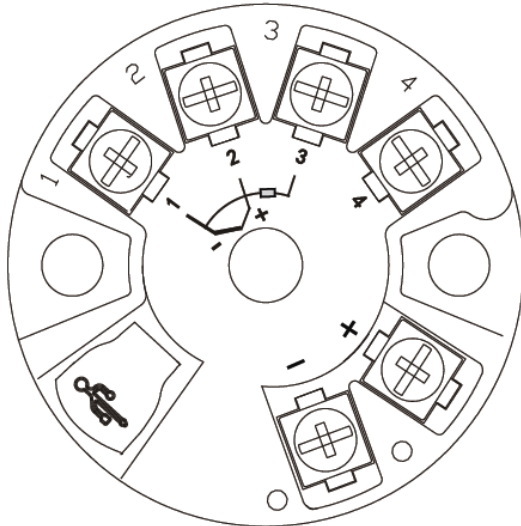
Input Resistance	Max. configurable measuring range (MR)	Min. measuring span (MS)	Wiring
Resistance	0 ... 4500 Ω	500 K	2-Wire

Dimensions [mm]



Unit: mm (approx. inch)

Designation of Connection Terminals

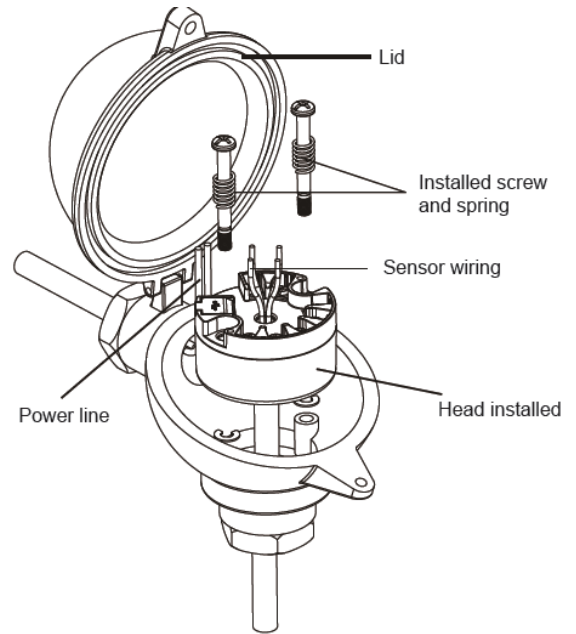
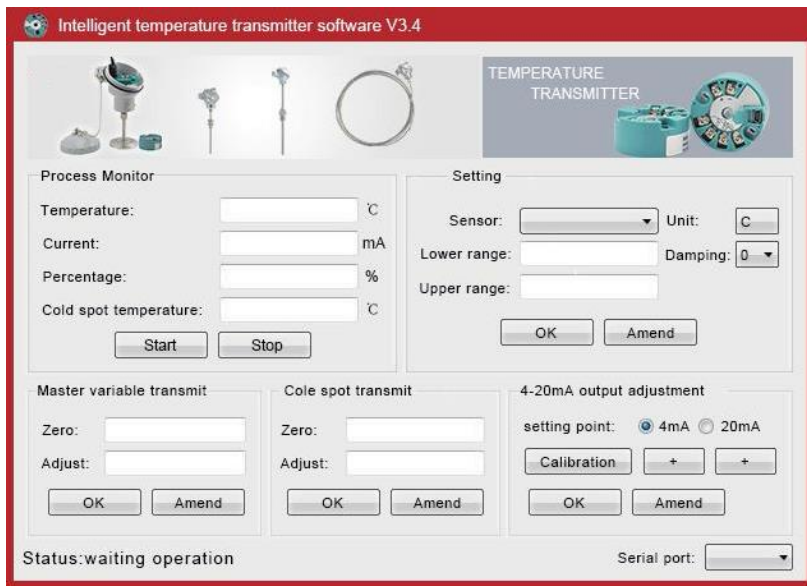


Note:

1. When mounting on a sensor head, don't overtighten the screws. Take necessary measure to avoid corrosion or damage of cables and wires.
2. RTD (platinum resistance) input: three wire resistance value must be equal, each wire resistance is no more than 10Ω .

Programming Steps

1. Install the driver.
2. Connect the transmitter to PC, then open the software.
3. Choose the sensor type and temperature unit.
4. Set the temperature range accordingly.
5. Click ok or amend if need modify and then finish.
6. Other parameters are default and no need to set normally.



PRESENSE reserves the right to make any change in this publication without notice. The information we provided is believe to be accurate and reliable as of this product sheet.



✓ Fully Configured in China



✓ 24h Support



✓ Reliable



✓ Up To Date